



EASY DATA SHARING

- Clear and customizable result reports.
- XML-based technology for easy data and image transfer.

AR & power mapping (Wavefront)		Corneal topography	
Sphere	-20.00D ~ +20.00D	Number of rings	24
Cylinder	0D to + 8D	Number of measuring points	6 144
Axis	0° ~ 180°	Number of analysed points	More than 100 000
Minimum measurable pupil diameter	ø 2 mm	Covered corneal area at 43D (ø)	From 0.33mm to more than 10mm
Number of measuring points	1500 points	Diopters measured field	From 1 to 100
Acquisition time	0.2 sec	Repeatability	0.02 D
Method	Shack-Hartmann	Method	Placido rings
Pachymetry ⁽¹⁾ , IC angle and pupillometry		Tonometry ⁽¹⁾	
Pachymeter Range - Resolution	150-1300 µm (+/- 1 micron)	Measurement Range	1 mmHg to 50 mmHg
IC angle range / IC resolution	0°-60° / 0.1°		
Pupil Illumination	Blue light 455 nm		
Method	Scheimpflug		
Integrated printer	•	Screen	10.1" Multitouch screen
External output terminal	RS232 / USB / VGA / LAN	Dimensions and weight	320 (W) x 555 (D) mm - 27 Kg
CE Conformity marking		Power-supply	100 - 240 V AC, 50/60 Hz

(1)Tonometry and pachymetry available on Wave analyzer Medica 700.

	Keratometry	Refraction	Aberrometry	Pupillometry	Topography	Tonometry	Pachymetry
Wave analyzer medica 700 	✓	✓	✓	✓	✓	✓	✓
Wave analyzer cornea 700 	✓	✓	✓	✓	✓		

Wave analyzers

RAPID. AUTOMATIC. FEATURE-RICH.



ComeLink Communication 09/2014- As part of a constant drive for improvement, these specifications are not contractually binding and are subject to change without notice.

WAVE ANALYZERS WAVEFRONT ABERROMETERS



Instruments Division
64 bis, avenue Aubert
94306 Vincennes Cedex France
Tel: 33 (0)1 72 94 71 00
Fax: 33 (0)1 72 94 70 27
www.essilor-instruments.com

Your local distributor :

RAPID. AUTOMATIC. FEATURE-RICH.

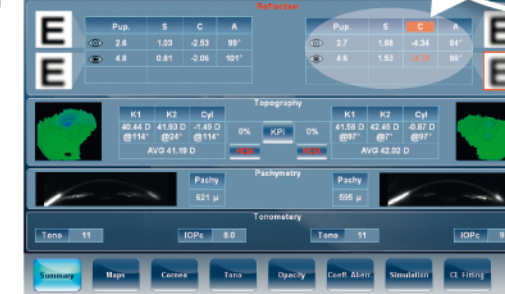
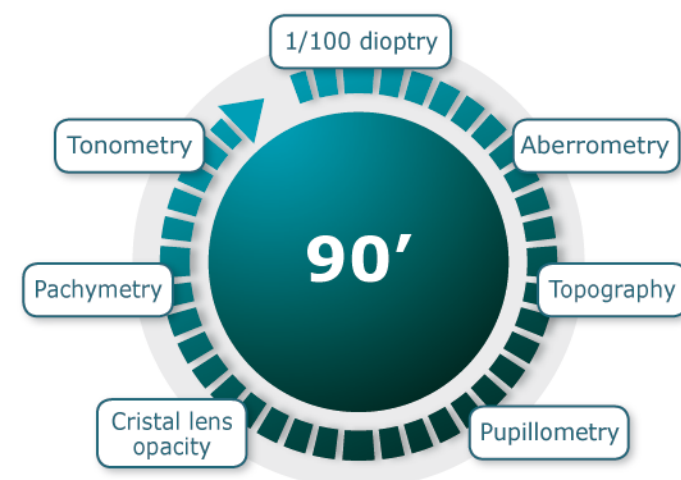
The **Wave analyzer** is a very intuitive, rapid and fully automatic aberrometer. It provides 1/100 dioptre refraction and lots of detailed measurements related to corneal topography, Scheimflug-based pachymetry and tonometry. Connectable, it facilitates easy results sharing and data transfer.

FAST & FULL AUTOMATIC MEASUREMENT PROCESS

- All measures are automatically performed by the device once the chin rest level is adjusted.
- Intuitive navigation and measurement cycle progression on the large touch screen

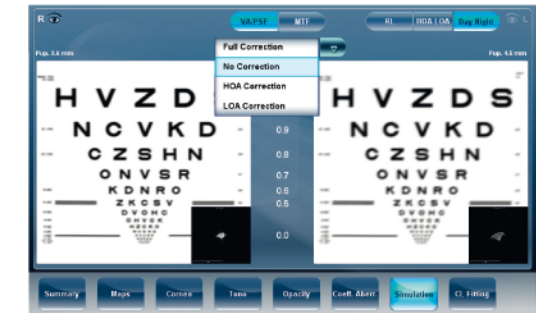


- Wave analyzer cornea 700 performs 4 measurements in less than 1 minute.
- Wave analyzer medica 700 performs 7 measurements in 90 seconds.



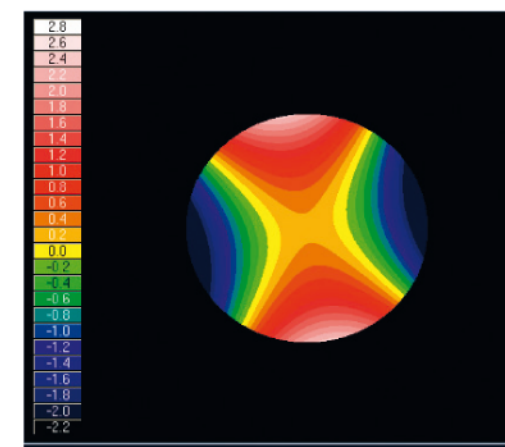
1/ 100 refraction

Built on wavefront and Shack Hartmann technologies.
Refraction of day and night vision.



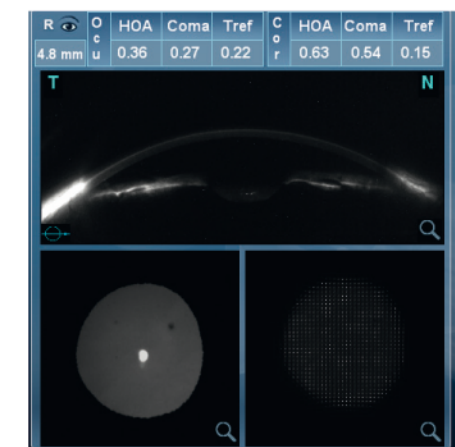
Low and high order aberration

allowing simulation of the quality of vision.



Topography and pupillometry for Contact lens fitting and Keratoconus detection :

- 100 000 points analysed,
- 3D simulation of the corneal curvature,
- Pupil diameter according to photopic/scotopic.



Retroluminescence

Cristalens opacity check and cataract screening.

Scheimflug-based Pachymetry and tonometry

Non contact tonometry with comprehensive image of the anterior segment.
Secured glaucoma screening especially with IOP value automatically corrected according to corneal thickness and irido corneal angle.

